

Short Tips

things that didn't fit elsewhere

- Recovery Console
- Runas
- Driver Verifier
- Bluescreener

Recovery Console

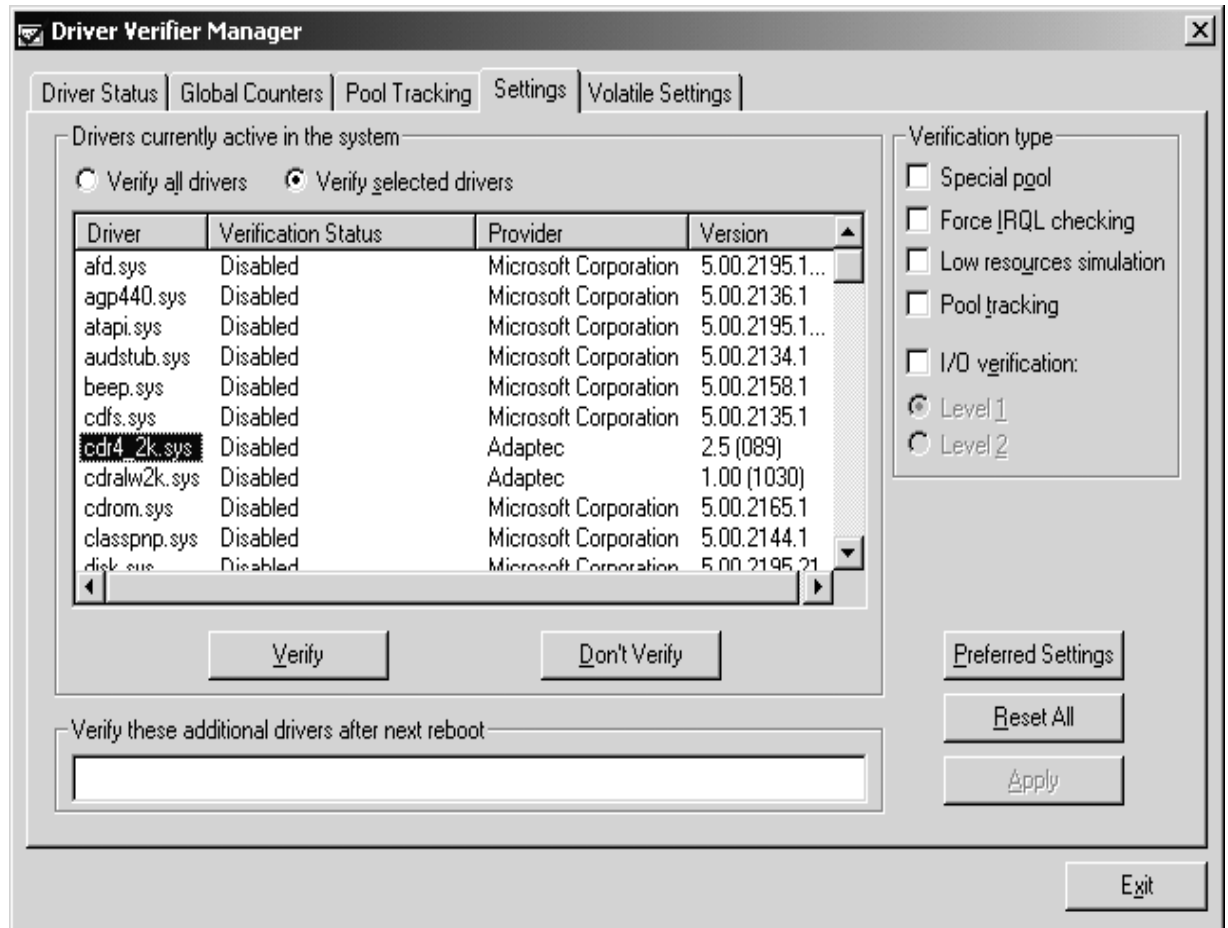
- Gives you a DOS-like interface even for NTFS boot drives
- Installed with `winnt32 /cmdcons`
- Or you can boot from the CD-ROM

Runas

- Like Unix's "SU" command
- Lets you run an application under a different account
- Runas [/profile] [/env] /user:*username* "*command*"
- Example:
 - runas /user:adminperson cmd.exe
- Or shift-rt-click, "run as..." appears

Driver Verifier

- Lets you “quarantine” new drivers or anti-virus apps
- Checks GPFs, memory leaks
- Click Start/Run, type “verifier”



Keyboard-Forced Blue Screens!

- HKEY_LOCAL_MACHINE\SYSTEM\CurrentControlSet\Services\i8042prt\Parameters
- Entry “CrashOnCtrlScroll” of REG_DWORD
- Set to 1
- Then type Ctrl-Scrllock-Scrllock, must use the Ctrl on the right hand side of the keyboard
- Bluescreens 2000

Smaller Crashdump Files

- memory.dmp is usually a bit larger than the system RAM – too large nowadays!
- But 2K lets you say to just save the kernel memory, a much smaller amount
- Or, even better, do a “minidump” of just 64K

So, How'd You Like It?

- I hope you found this excerpt from the course useful.
- The entire course is a bit over 11 hours in total; visit www.minasi.com/audiosales to order it in cassette or CD format. The course comes with a *printed* version of the Powerpoints.
- Whether you buy or not, could I ask that you drop me a line with feedback? Let me know how you liked this at help@minasi.com.
- Thanks!